



## FleeTrak AMS Mobile

FleeTrak AMS Mobile is a platform which gives access to the lite version of FleeTrak Monitor from the mobile browsers and mobile devices such as Android, iPod, iPhone.

Only native browsers can be used, and cookies should be activated in the browser.

FleeTrak AMS Mobile basic features are as follows:

- displaying unit current position on map;
- unit movements for latest 5 messages;
- dynamic filter of units by name;
- information about unit state, connection, driver, sensor values, etc.;
- tracking of moving units;
- Geolocation.

## Login

To access FleeTrak AMS Mobile, enter its web address in browser, e.g. <http://mobile.fleetrakams.com> for general mobile browsers and <http://mobile2.fleetrakams.com> for IOS and Android mobile. On the login page input your user name and password, the same as you use to login to the system from an ordinary computer.

After you have logged in, the main menu becomes available.

A screenshot of the login page for FleeTrak AMS Mobile. The page has a dark background with a grey header that says "Authorize yourself". Below the header, there are two input fields: "Login:" with the text "user001" and "Password:". At the bottom, there is a "Login" button.

## Navigation

The following options are accessible through the main menu:



- **Units**: This displays the list of available units with short information on them;
- **Map**: It show units on the map (to be 'seen', unit has to have a special flag enabled in its properties – *Show on map*);
- **Settings** – Custom configuration of the mobile application;
- **Logout** – logout from the mobile application.



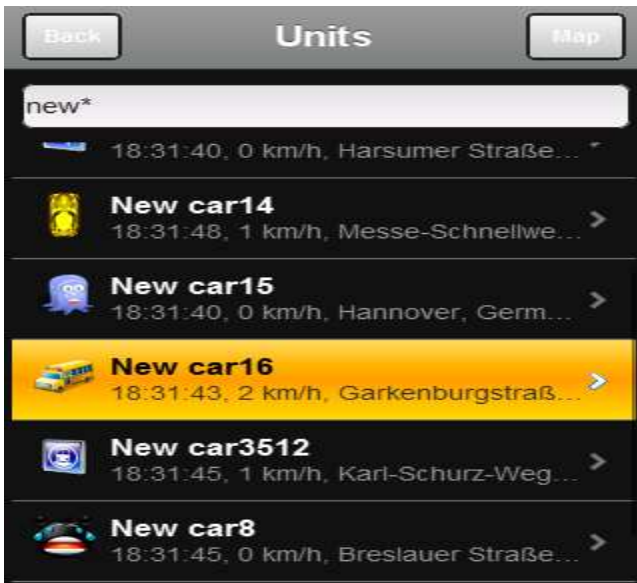
## Units

At the first login, no units are displayed on the list until you apply a filter. However, further times your previous work list will be restored.

To add or remove units from the work list, use a filter at the top. As you type, the work list is updated dynamically to fit your query (see dynamic filter) to display all units.

Units on the list are displayed with their names and icons. Additional information on each unit is available as well: time, speed, and location.

When you click on a unit, its properties are displayed.



### Unit Properties

Unit properties are divided into two tabs:

**Information:** This shows the information on current state of unit:

- Main: time, phone number, UID (phone number and UID are available only if the current user has manage access to this unit);
- Position: location (if available), speed of movement, altitude, satellites locked, course (direction of movement, if available);
- Parameters: state of inputs/outputs and other parameters available in the last message.





**Settings:** It provides the unit display on the map:

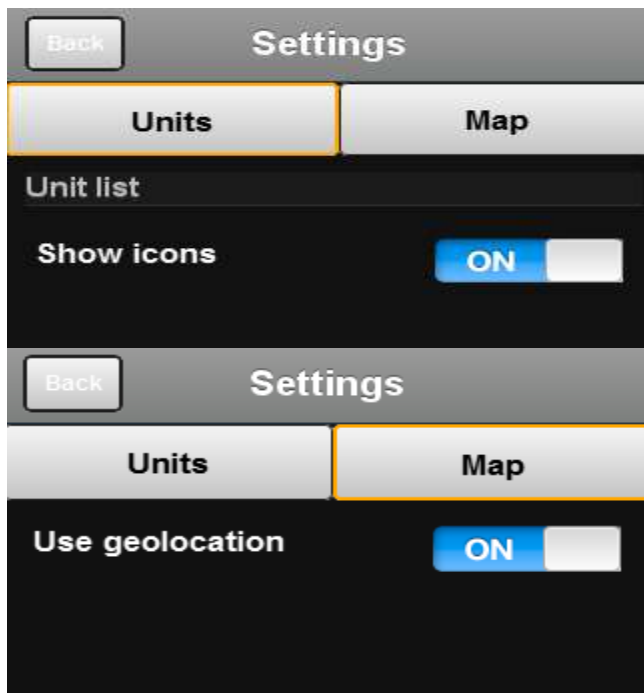
- Show on map: if activated, unit will be seen on the map (the option is stored only for the current user);
- Watch on map: if activated, each time new message from this unit comes, the map automatically moves to its latest location (the option is stored only for the current user).

To return to the work list, press *Back*. All altered properties are saved automatically.

If a unit has the *Show on map* option enabled, there will be the *Map* button on the right. Clicking on it you can view unit current location.

### Settings

Settings are also divided into two tabs:



**Units:** This provides options concerning the work list of units:

- *Show icons* — enable/disable displaying units' icons in the work list. By default, the option is activated. However, you may want to disable it in order to increase program performance. Smooth scrolling of the work list depends on mobile device properties, Internet, and other factors.

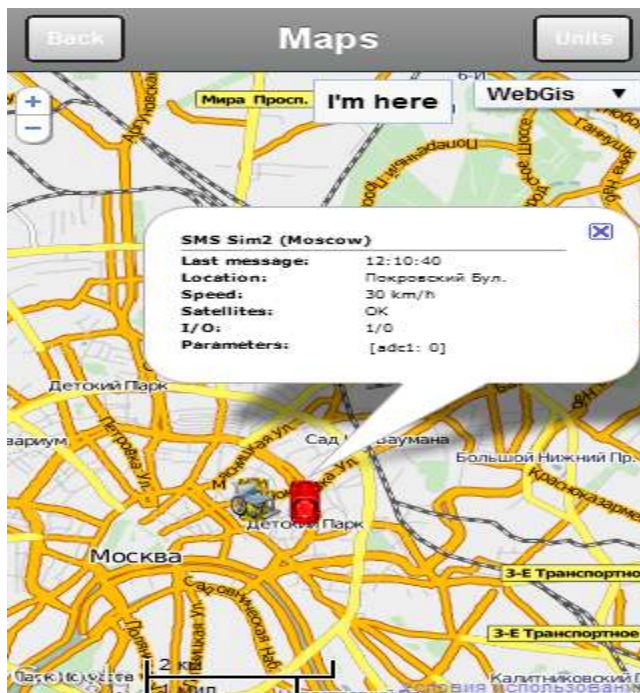
**Map:** This displays options concerning the map:

- *Use geolocation:* enable/disable geolocation function.
- *Address provider:* address provider can be either Gurtam Maps or Google Maps.

To return to the work list, press Back. All altered properties are saved automatically.

## Map

The Map mode is designed to locate current position of units and track them. The map displays only units that have the *Show on map* flag enabled in their properties.



On the map a unit is depicted by its icon. Besides, it can have a tail (red line) that shows its movements for last 5 messages (if these movements were detected within the current session).

If you click on a unit displayed on the map, in the tooltip you can see the detailed information about this unit.

If you move to the map from the main menu, the map is scaled in the way to let you see all selected units. If you move to the map from unit properties, the map is centered on this unit.

However, map zoom can be altered, and the map itself can be moved. The scale (i.e. zoom level) is changed with the help of plus/minus buttons in the top left corner as

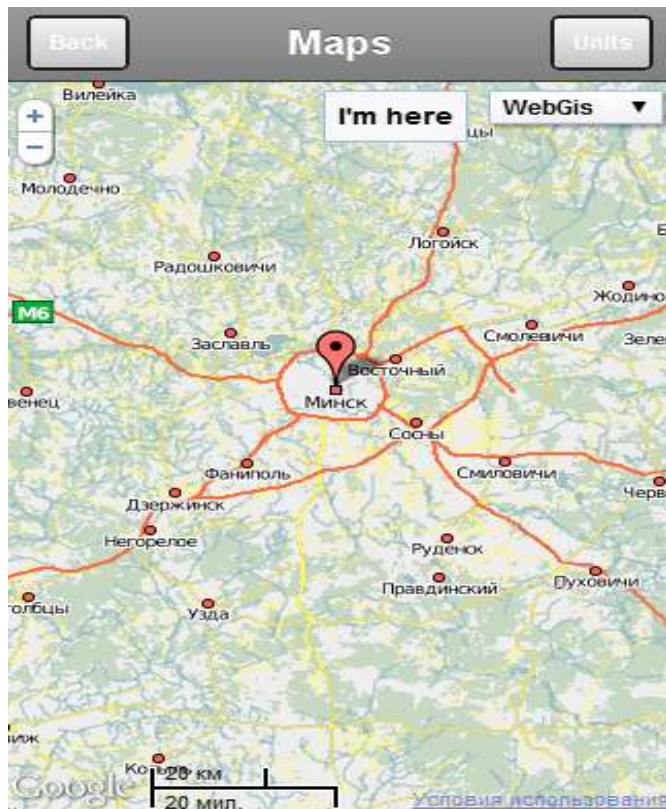
well as with the help of scroll button. To move the map, just drag it to the desired direction. In Apple devices the map can be also zoomed using multitouch function.

You can choose from several kinds of maps:

- Gurtam Maps,
- Google Map (with and without captions),
- Google Satellite.

## Geolocation

FleeTrak AMS Mobile supports geolocation function. Geolocation is the identification of the real-world geographic location of an object, such as mobile phone or an Internet-connected computer terminal known from the Internet Protocol (IP) address, MAC address, hardware embedded article/production number, embedded software number, or other information.




Geolocation is activated in settings. Also you may need to check browser settings.



FleeTrak™



When you switch to the map mode, the program essays to locate you. Your supposed position will be indicated on the map with a special marker . In addition, the button *I'm here* will appear on the top. Click on this button at any time to move the map to your current location. Click on this marker to see available address information (it is taken from Google Maps, not from Gurtam Maps).

In case geolocation is not successful, an error is displayed and the corresponding marker and button are not shown.