

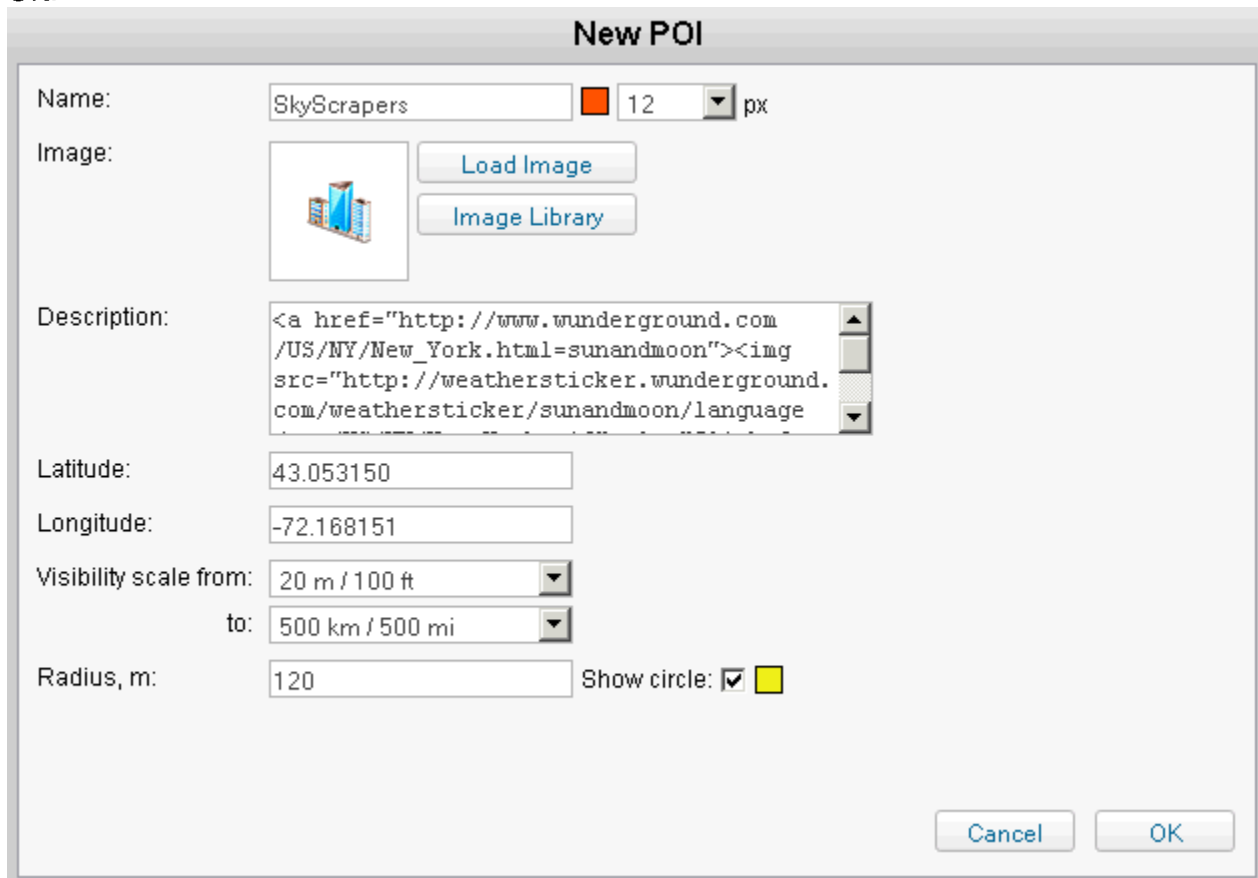
## Point of Interest (POI)

POI (point of interest) is a place on the map that has some importance for you and requires a special attention in the tracking process. Each place can have its image on the map (an icon or image). In addition you can add any comments.

### How to Create POI

To create POIs, you should have *Create, edit, and delete POIs* access at least to one resource.

POIs are created on the *POI* panel. Click the *New* button and double-click on the map to locate a new POI. Fill in the dialog of POI properties (at least, name is required) and press OK.



- **Name**  
Name is a required parameter for POI' like any other system object. It can be of one or more symbols. Besides, you can specify font color and size for the caption.
- **Image**  
Each POI can have its own image. An image can be chosen from the standard icons (*Image Library* button) or loaded from your computer (*Load Image* button). Supported formats are PNG, JPG and GIF. All loaded images are automatically resized by 64x64 pixels to display the POI on the map and on the list. However, in the tooltip for the POI you can see enlarged image (up to 256x256 pixel).



- **Description**  
when you create a POI, this field is automatically filled with address information for the point. However, you can edit it and write any custom description. Its length is not limited. You can use *html* (including *iframe*) tags in descriptions in order to format text or get images from other sites. For example, you can embed video from web cameras; get photos from crossroads, load weather or currency exchange, etc.
- **Latitude & Longitude**  
Coordinates are indicated automatically depending on the point on the map you have double-clicked when creating the POI. However, you can edit coordinates manually if necessary.
- **Visibility scale**  
Visibility scale is map zooms at which POI will be displayed or not. For example, if POI is a city, it has sense to see it on remote scales, whereas if a POI is a building it is more logical to see it on more detailed scales. ⚠ Graduation of scales corresponds to map scales used in Google Maps (this scale is traditionally displayed in the bottom-left corner of the map).
- **Radius**  
Default radius for a POI is 100 meters. It can be used for address detection in reports as well as to display the POI on the map. Tick the *Show circle* checkbox and choose the color if you want the POI to be displayed on the map as a circle with the specified radius.
- When finished, press OK. The newly create POI will appear at the bottom of the list. However, when the list is reloaded, the POI will take its place according to the alphabet. At that, the flag to display the POI on the map will be enabled.

## How to Manage POI

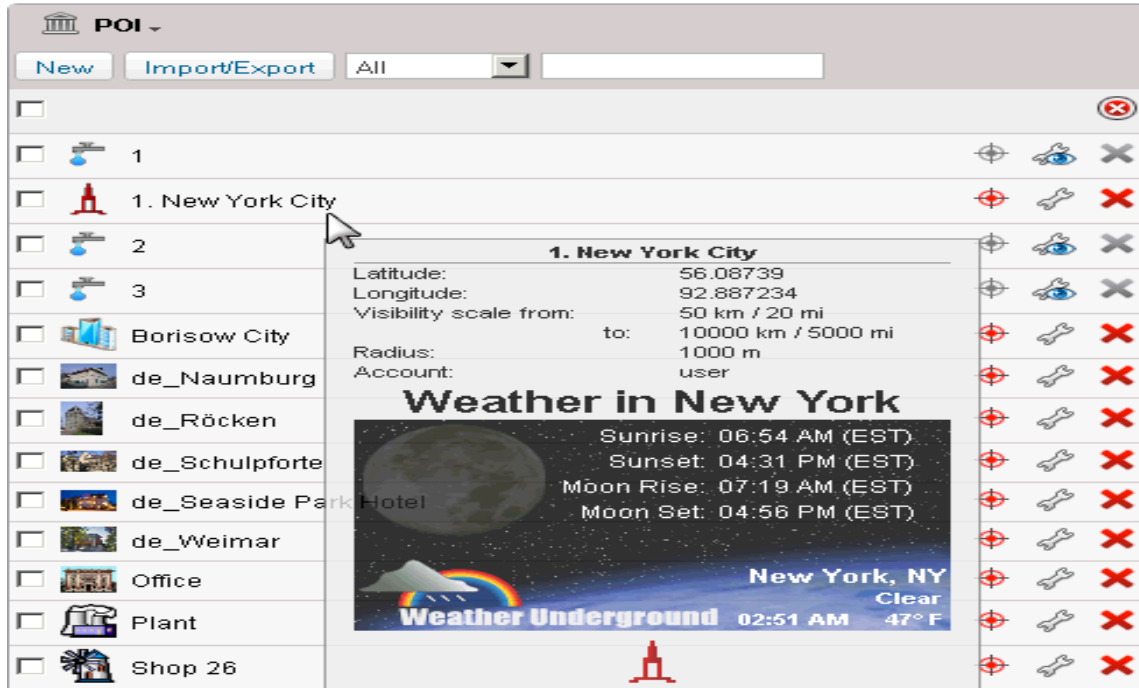
POI' are sorted by name. To quickly find a certain place, use the dynamic filter above the list. Begin to input the name of a place and see the results. To move to certain POI on the map, simply click on its name on the list.

In the first column of the table tick those POI' that should be seen on the map. Put the flag at the header of the list to select/unselect all POI. POI can be presented on the map by their names (default color is orange), attached images and circles as well as any combination of these three elements. Overlapping POI can be grouped under one icon. Parameters of POI visualization are adjusted both in POI properties and in User Settings.



If you have too many POI to show on the map, it may slow down browser performance. In this case, enable the option to render POI on the server (see User Settings => Maps).

Place a mouse cursor over a place name on the list or on the map to see related information in a tooltip: name, coordinates, visibility scale, radius, description, enlarged image, and an account which the POI belongs to (if there is access to several accounts). If POI' are rendered on the server, only name and description can be displayed in the tooltip. If the description contains links to any external content, it is shown in the tooltip. For example, a tooltip of POI can look like this:



The following buttons can be used to manage created POI:

### Images / Buttons

*Change POI location.*

When you click this button against a POI, a red marker appears on its place. Double-click on any other place on the map to move your POI there and press Save.



Otherwise, press Cancel to ignore changes.



*Edit or view POI properties.*

These buttons are used to open POI Properties dialog where you can edit POI or just



view its properties (depending on your access).

*Delete POI.*



To remove place, click the Delete button against it and confirm your intension. You can even delete several POI' at once if you check them and click the Delete button at



the heading of the table.

If you have just the view access to the account where a POI is located, you cannot move, edit or delete this POI. That is why the corresponding buttons are dimmed.