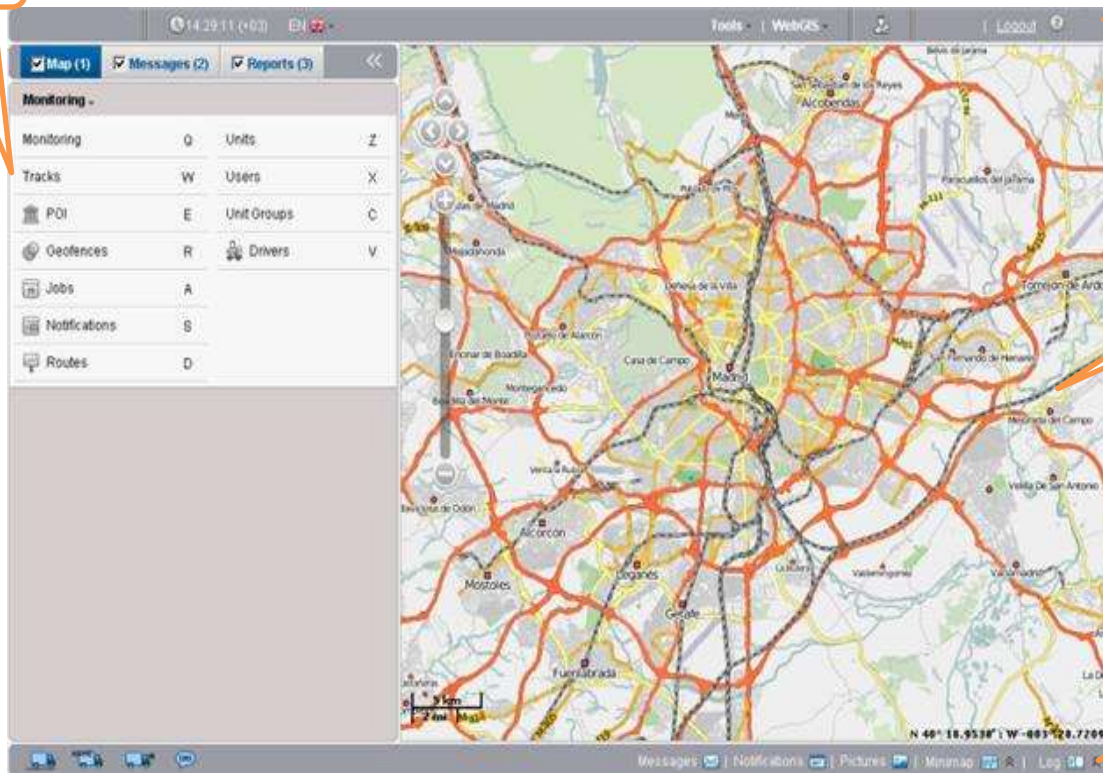


Introduction to FleeTrak Monitor User Interface

The User interface of FleeTrak monitor is simple and in many cases intuitively intelligible. There are plenty of screen tips and helpers associated with various buttons, icons, dialog boxes, edit fields, and other elements of interface.

In the Figure below, you see general view of the application software. To observe the system in a greater scale, switch to the full screen mode

Work Area



Top Panel

Map

Ground Panel

The FleeTrak Monitor application Interface above contains the following description:

- The top panel: contains the following links; Logout, Tools, Map Menu layer Type, Language Menu, Current time
- The Ground Panel: contains the following links; Logs, Minimap, notification, messages, Pictures
- The Work Area: The Work Area contain the following modes:
 1. Map Mode where you track you units and manage attendant system elements like Geofences, drivers, job, notifications, etc.
 2. Messages Mode where you can view database of messages received from your units (this mode is optional).
 3. Reports Mode where you generate reports based on data received in messages.